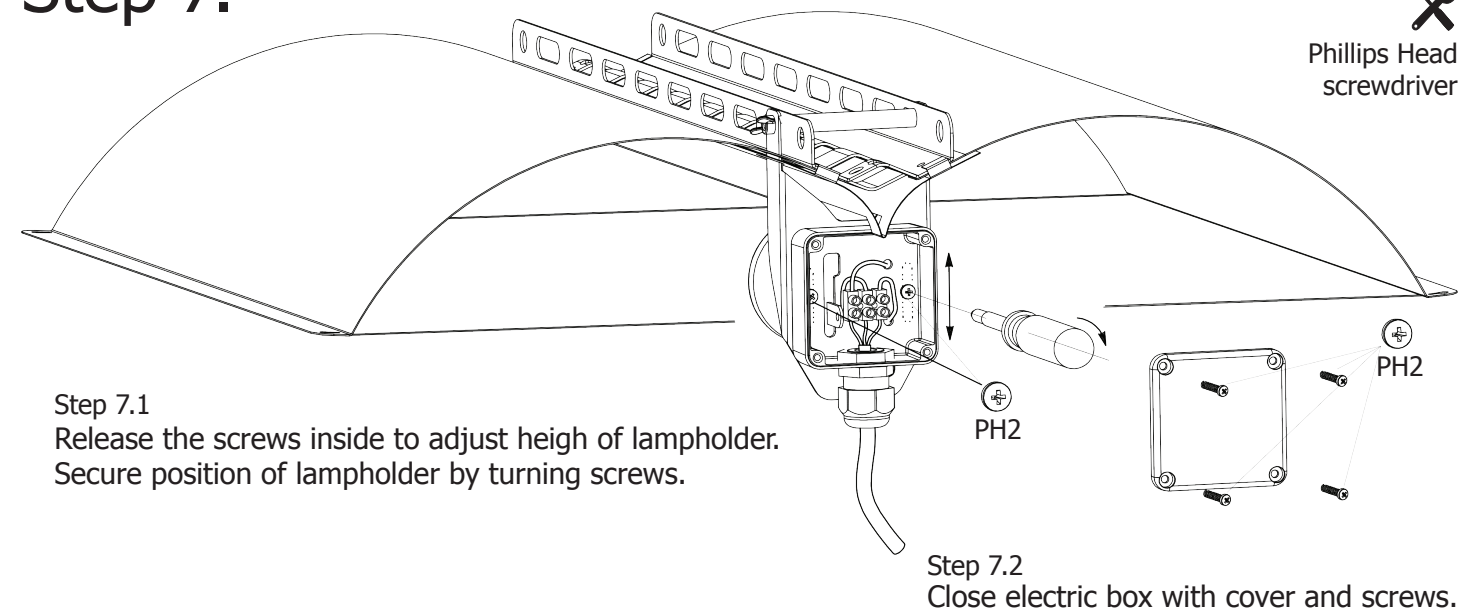


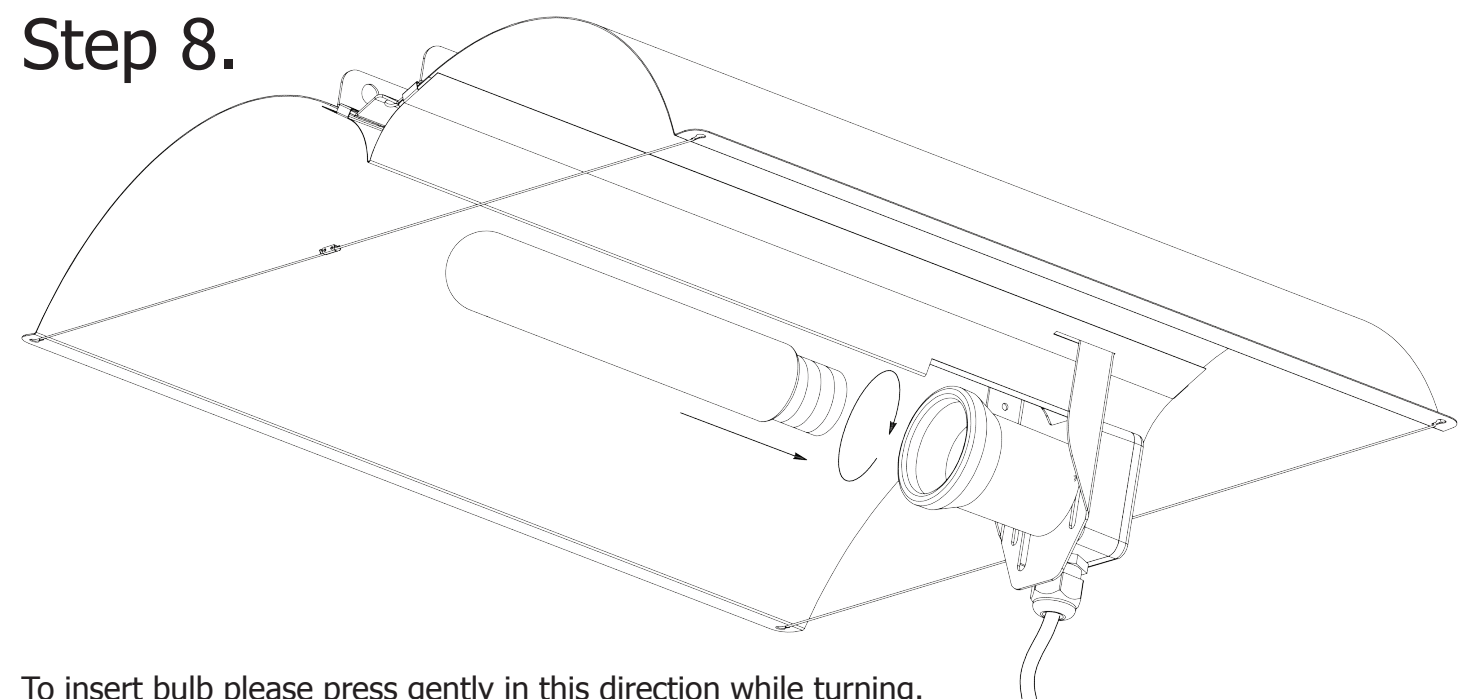
# AZERWING V<sub>pro</sub>



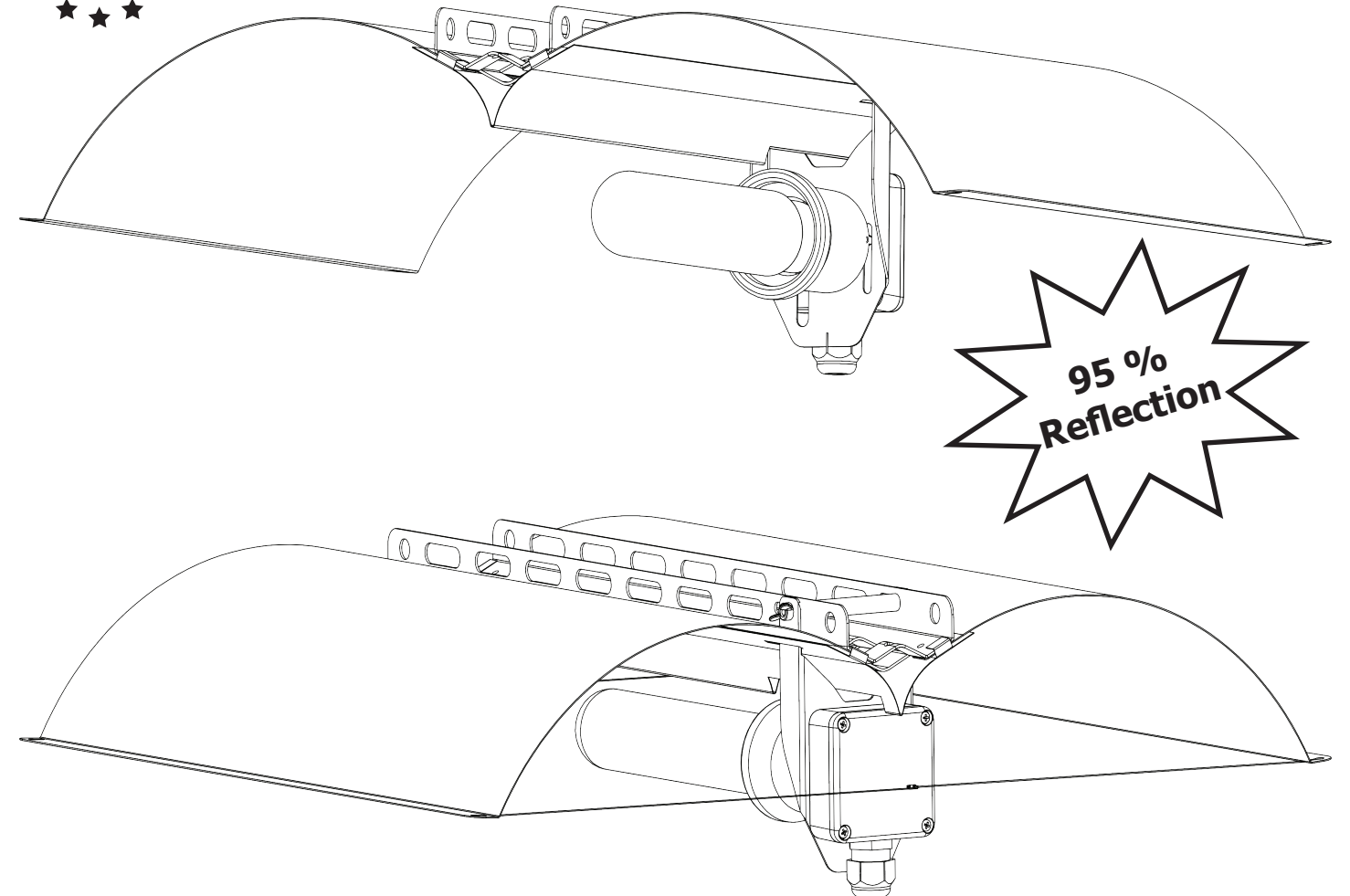
## Step 7.



## Step 8.



To insert bulb please press gently in this direction while turning.



### EASY CONNECT

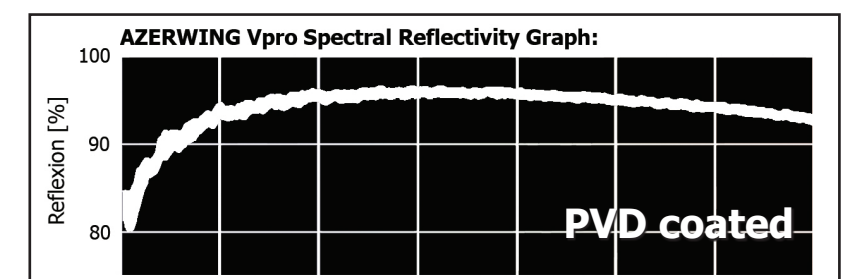
- build up time in 5 minutes
- electric box with bracket assembled

### UNIQUE

- EU patents pending

### ADJUSTABLE

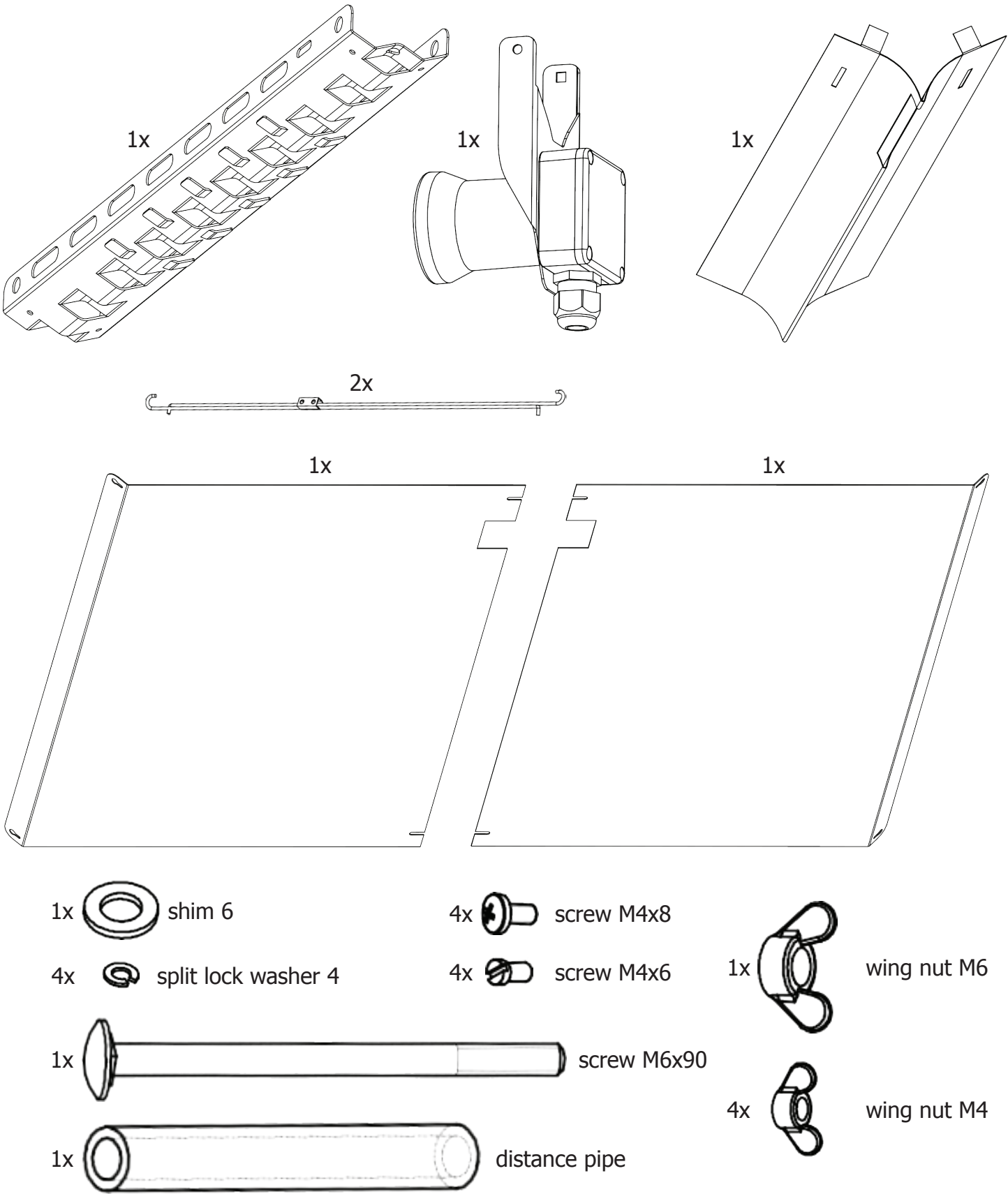
- adjustable height and inclination of lampholder
- reflector wings stepless adjustable



product made by:

**primaklima**

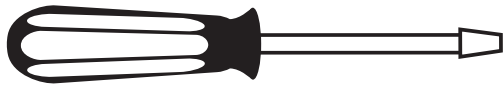
# Assembly instructions



✂ Notwendige Werkzeuge

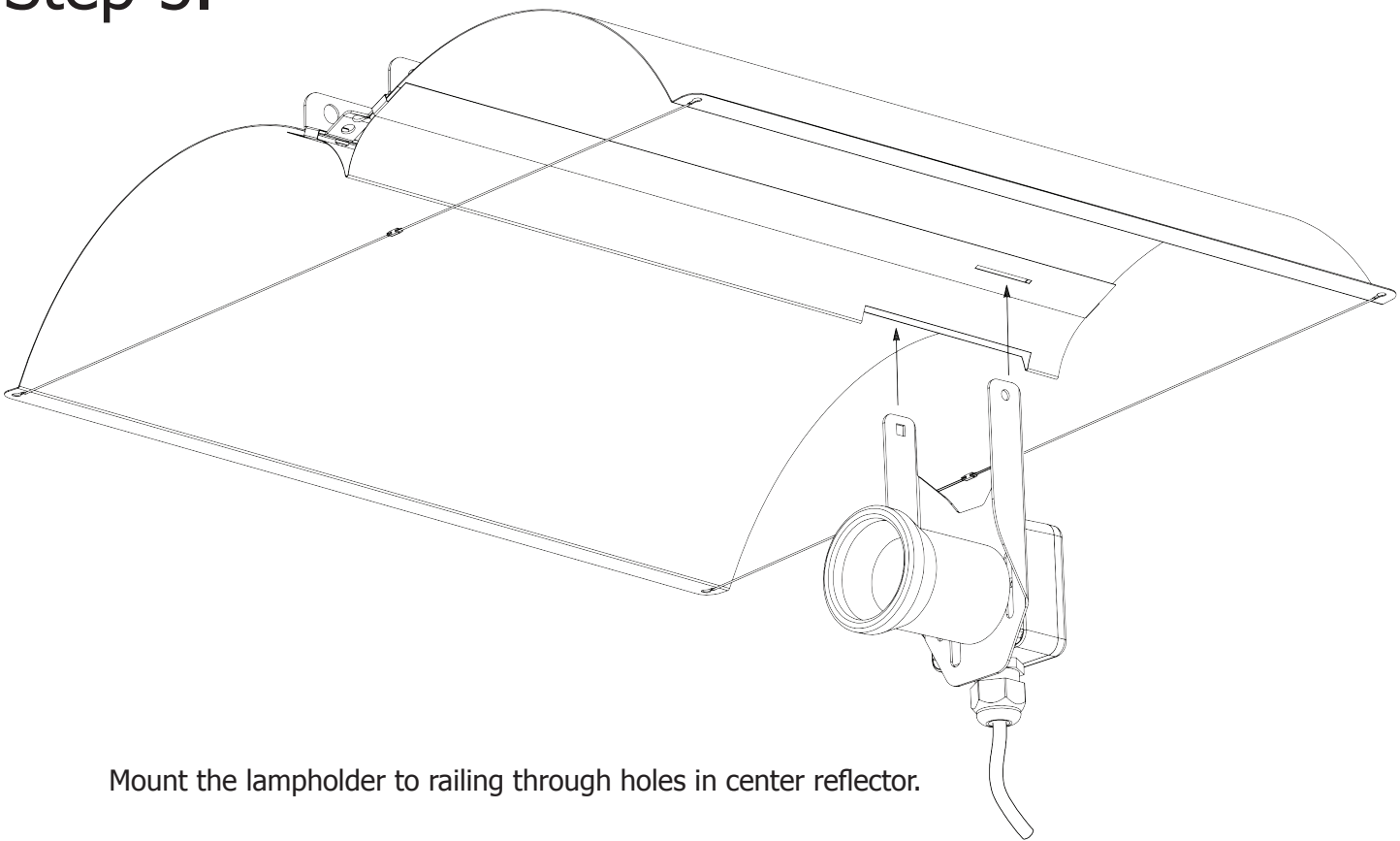


Phillips Head 2 screwdriver

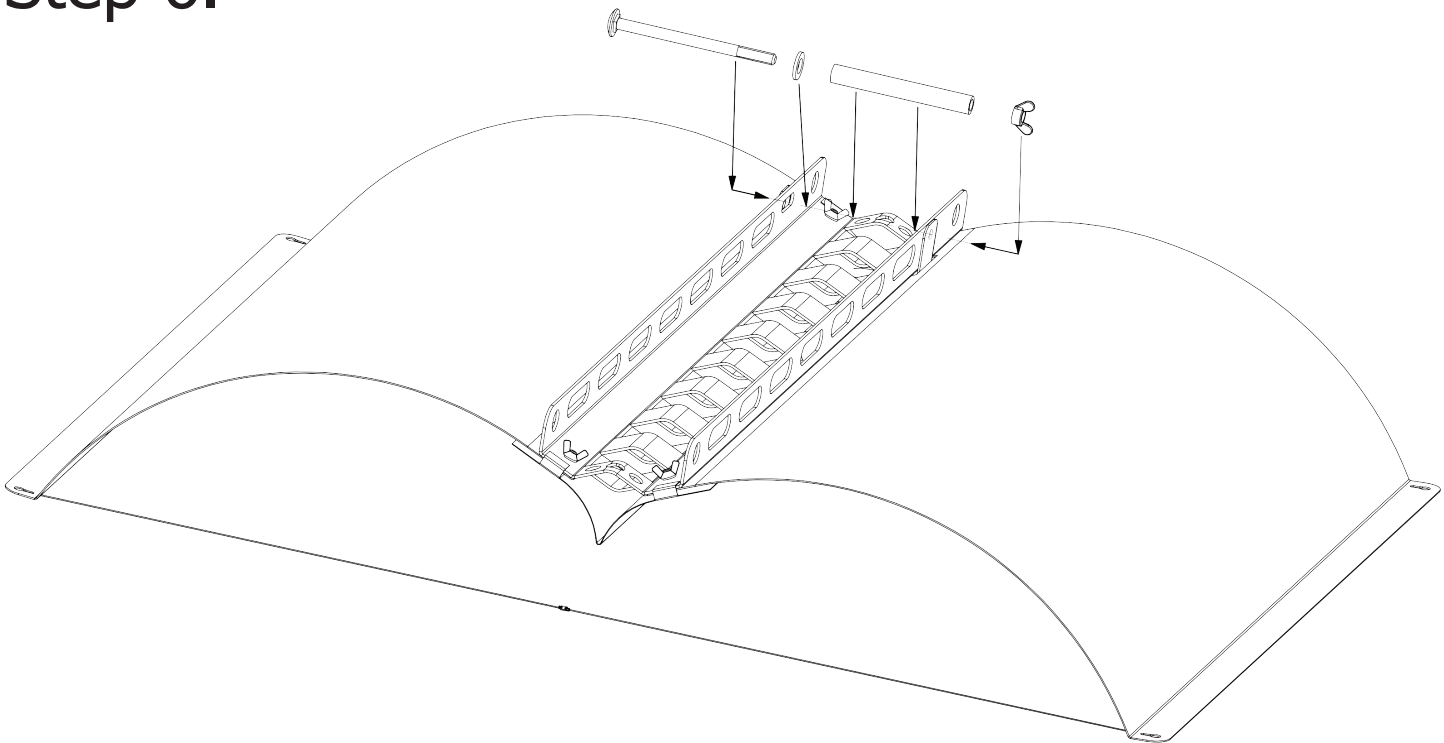


Slot Head 3mm screwdriver

## Step 5.



## Step 6.



Secure the lampholder by using screw M6x90, schim 6, distance pipe and wing nut M6.